

EXHIBIT "C"

LEGAL DESCRIPTION OF ASSOCIATION PROPERTY

THAT CERTAIN REAL PROPERTY LOCATED IN THE CITY OF NEWPORT BEACH, COUNTY OF ORANGE, STATE OF CALIFORNIA, MORE PARTICULARLY DESCRIBED AS:

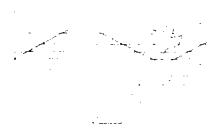
LOTS "B" "C" "D", "F", "G", "I" "J" AND "K" OF TRACT NO. 15391 FILED IN BOOK 761, PAGES 39 THROUGH 43, INCLUSIVE, OF MISCELLANEOUS MAP IN THE OFFICE OF THE COUNTY RECORDER OF SAID COUNTY.

TOGETHER WITH

LOT 45 AND LOTS "E" AND "F" OF TRACT NO. 15387 FILED IN BOOK 761, PAGES 35 THROUGH 38, INCLUSIVE, OF MISCELLANEOUS MAP IN THE OFFICE OF THE COUNTY RECORDER OF SAID COUNTY.

ALL AS SHOWN ON EXHIBIT "A-1" ATTACHED HERETO AND MADE A PART HEREOF.

DRE PHASE 1

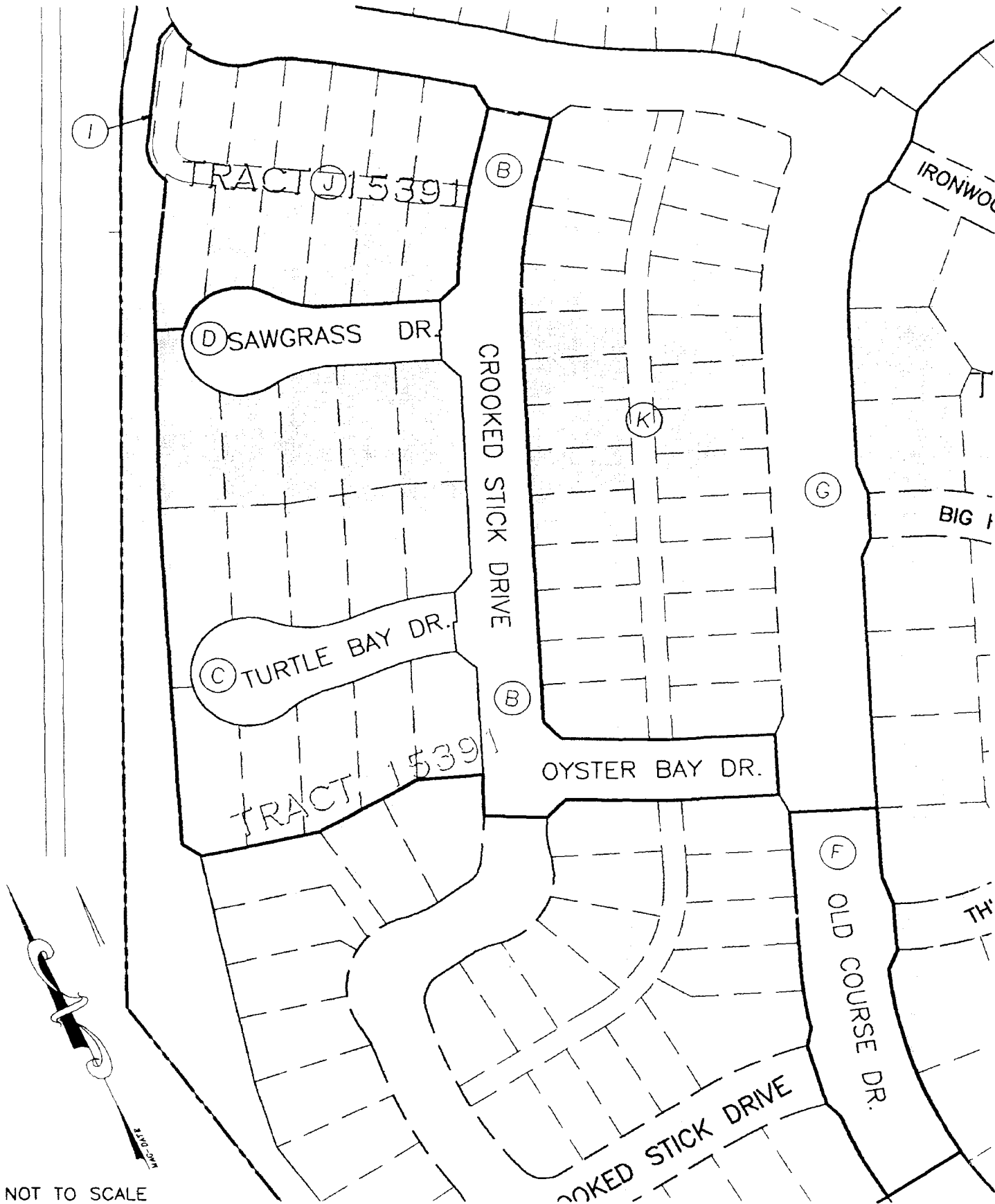


**ADAMS • STREETER
CIVIL ENGINEERS, INC.**
15 Corporate Park, Irvine, CA 92714
Ph: 714 474-2330 Fax: 714 474-0251
email: ASIASI@ix.netcom.com

EXHIBIT "C"

TO DECLARATION OF COVENANTS, CONDITIONS AND
RESTRICTIONS AND GRANT OF EASEMENTS FOR
ONE FORD ROAD COMMUNITY ASSOCIATION

EXHIBIT "C-1" GENERAL DEPICTION OF ASSOCIATION PROPERTY



NOT TO SCALE

DRE PHASE 1

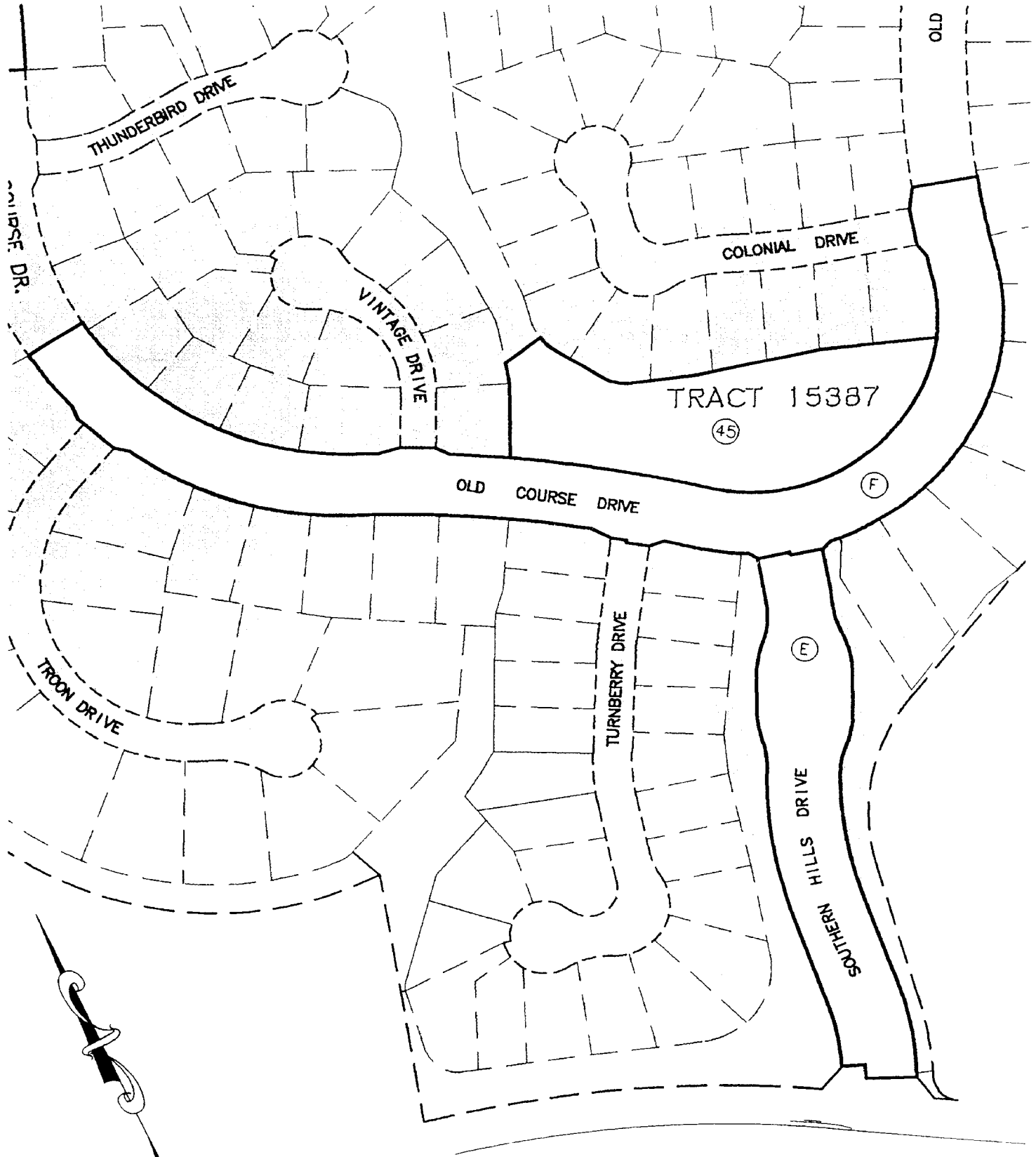
SEPTEMBER 11, 1997

PREPARED BY:



ADAMS & STREETER
CIVIL ENGINEERS, INC.
 15 CORPORATE PARK
 IRVINE, CA 92714 (714) 474-2330

EXHIBIT "C-1" GENERAL DEPICTION OF ASSOCIATION PROPERTY



NOT TO SCALE

DRE PHASE 1

SEPTEMBER 11, 1997

PREPARED BY:



ADAMS • STREETER
CIVIL ENGINEERS, INC.
 15 CORPORATE PARK
 IRVINE, CA 92714 (714) 474-2330